

## Data Visualization of Different Categories of Universities in Each District of Andhra Pradesh

Thatiparthi Kalasri<sup>1</sup>, Yerrapothu Rupa Sri<sup>2</sup>, Mrs. D. Leela Dharani<sup>3</sup>

*II B. TECH, Department of Information Technology<sup>1,2</sup>*

*Assistant Professor, Department of Information Technology<sup>3</sup>*

*Prasad V Potluri Siddhartha Institute of Technology, Vijayawada, Andhra Pradesh, India*

---

**Abstract:** This paper contains information about different categories of universities in each district of Andhra Pradesh, India. The study utilizes Tableau software and Microsoft Excel for data exploration, providing data regarding the universities in different districts. The study examines a range of university kinds, such as deemed universities, private universities, and institutions with government funding. This study uses data visualization techniques to enhance the understanding of the educational ecosystem in the region. It also helps to make evidence-based decisions and promotes educated conversations about how to make higher education in Andhra Pradesh more accessible, equitable, and high-quality.

**Index Terms:** Data Visualization, Universities

---

### 1. Introduction

The southern Indian state of Andhra Pradesh is home to a wide variety of institutions that serve students in a wide range of subject areas and academic specializations. These institutions contribute to the vitality and energy of the state's higher education industry, despite differences in their governance structures, funding sources, academic specializations, and overarching goals. We give a summary of the many kinds of universities in Andhra Pradesh in this introduction, emphasizing their unique characteristics and contributions to the development of the local education system.

### 2. Proposed Systems

This study recommends using Microsoft Excel and Tableau Software, two data visualization tools, to examine different types of Andhra Pradesh universities. The most important tool for arranging, enhancing, and presenting data is Microsoft Excel, which provides a strong framework for first analysis. Additionally, Tableau Software has strong visualization tools that let users make intelligent visuals and interactive dashboards. The advanced features of Tableau Software enable students to research universities that they may choose to attend for their post-secondary education. Students might have prior knowledge about the universities and their locations thanks to its intuitive UI.

### 3. Technologies Used

**3.1. Microsoft Excel:** One of the most important tools for careful data organization, purification, and basic visualization is Microsoft Excel, which offers a robust foundation for preliminary research.

**3.2. Tableau Software:** The well-known data visualization powerhouse Tableau Software makes it simple to build dynamic dashboards and thorough visual representations of colleges.

**3.3. Dashboard:** Dashboards are carefully built by combining different images with Tableau Software's dynamic features to provide students a complete picture of universities in different districts.

**3.4. Maps:** By adding location information, geographic mapping may be integrated into Tableau visualizations to help students learn about the various universities spread across Andhra Pradesh's enormous geography.

**3.5. Server:** In order to host and operate the Tableau reporting environment and provide smooth access to engaging dashboards and visualizations, a robust server infrastructure is essential.

#### 4. Results

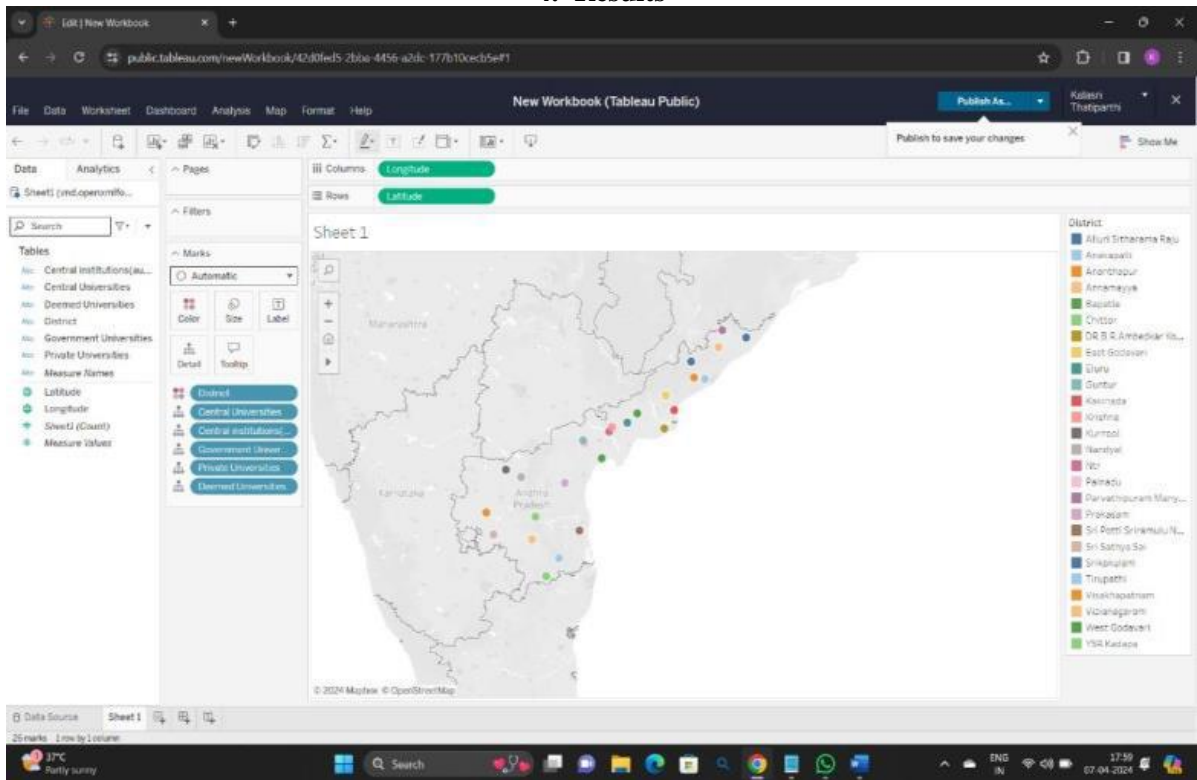


Figure 1.1: Map representing 26 districts of Andhra Pradesh with various colours

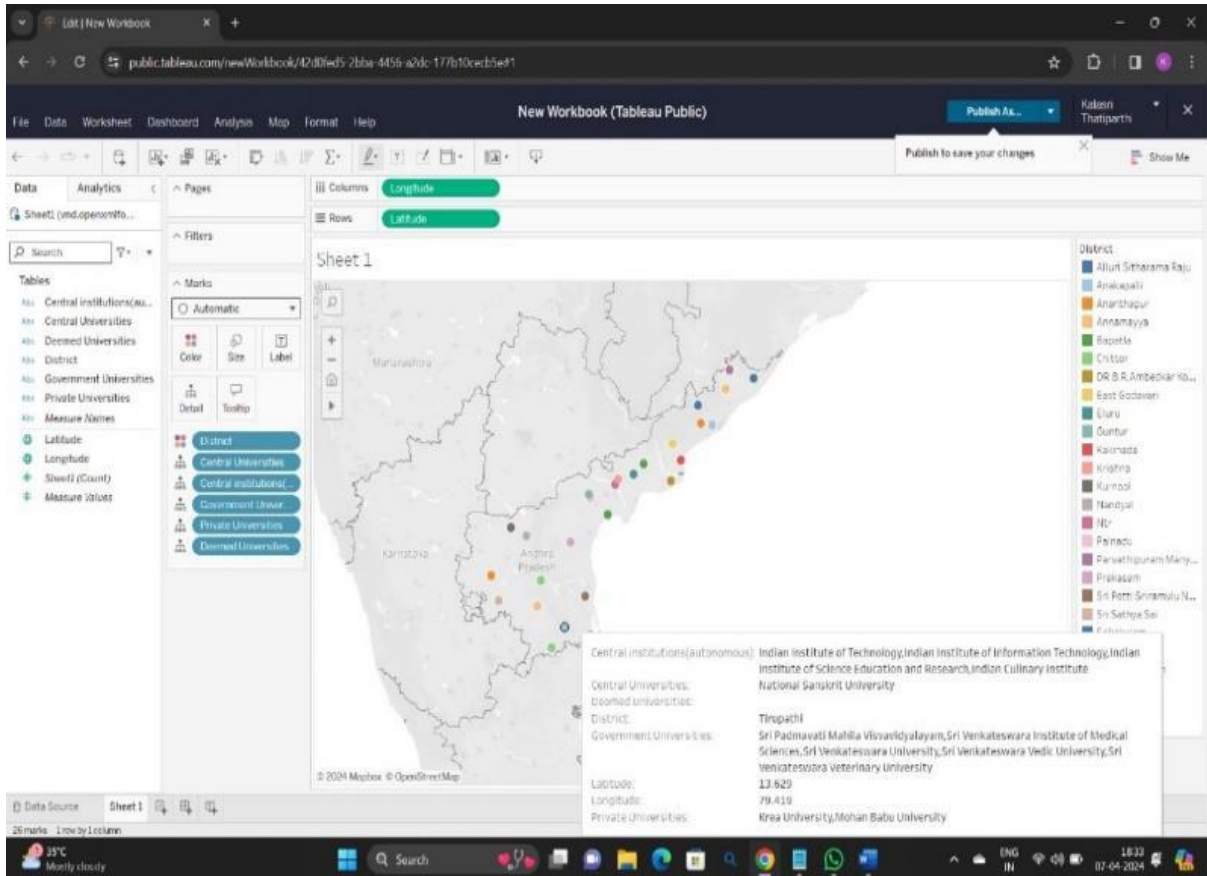


Figure 1.2: Map displaying various universities in the district of Tirupathi

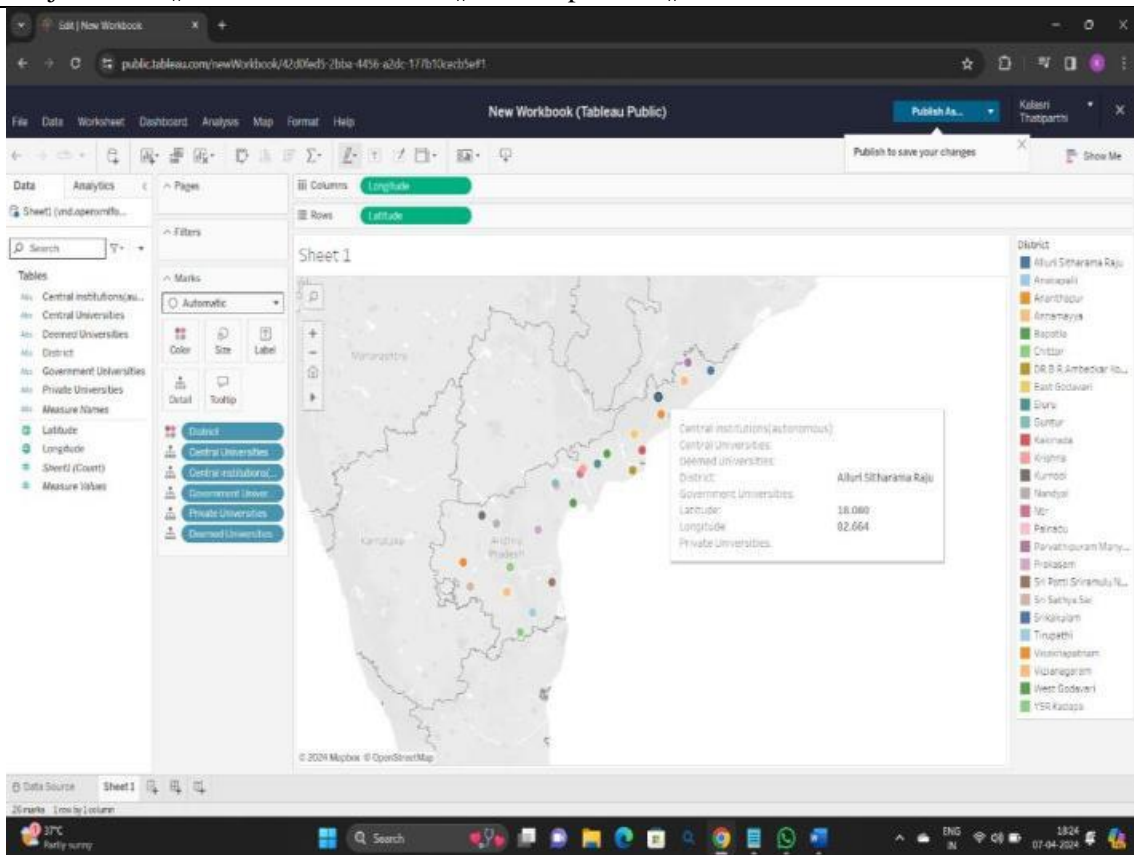


Figure 1.3: Map displaying various universities in the district of Alluri Sitharama Raju

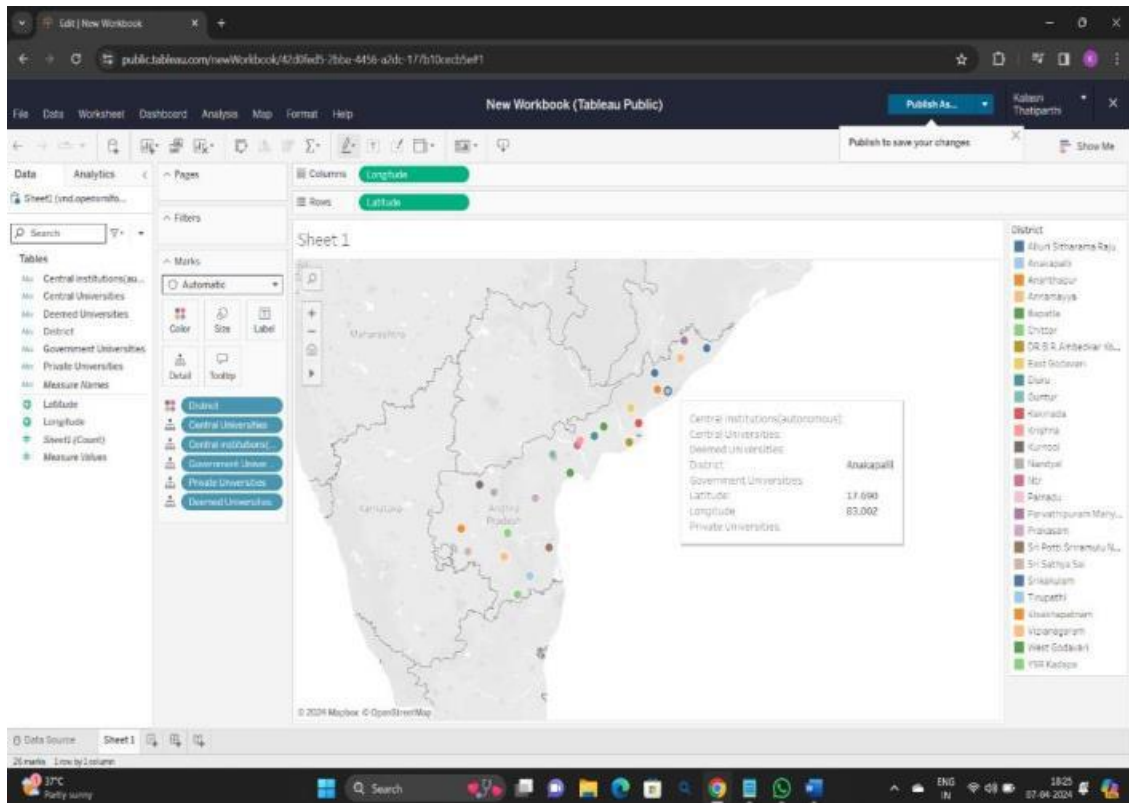


Figure 1.4: Map displaying various universities in the district of Anakapalli

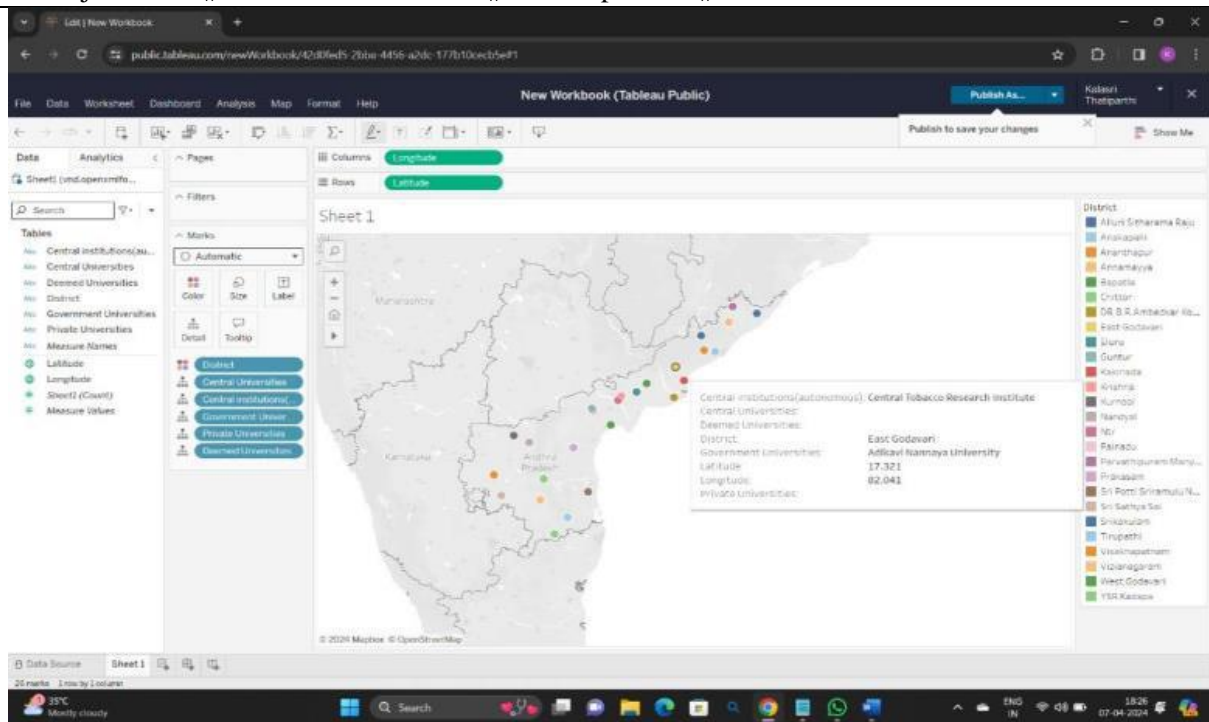


Figure 1.5: Map displaying various universities in the district of East Godavari

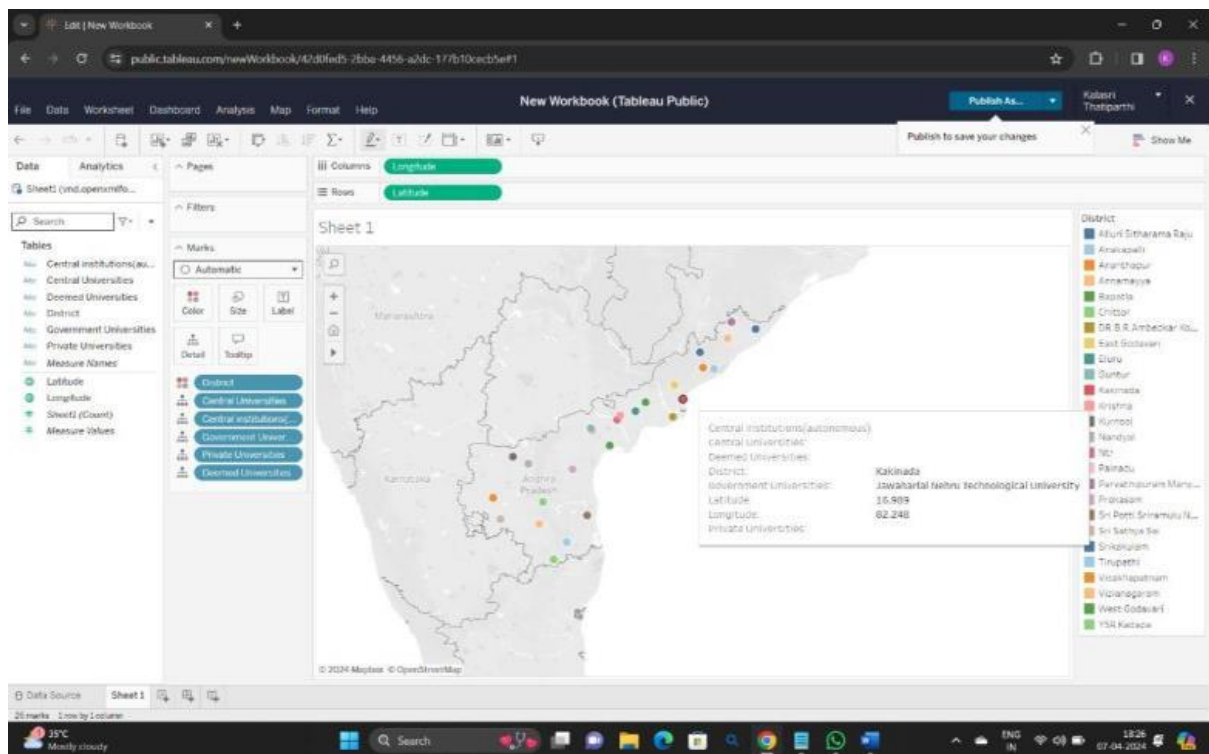


Figure 1.6: Map displaying various universities in the district of Kakinada



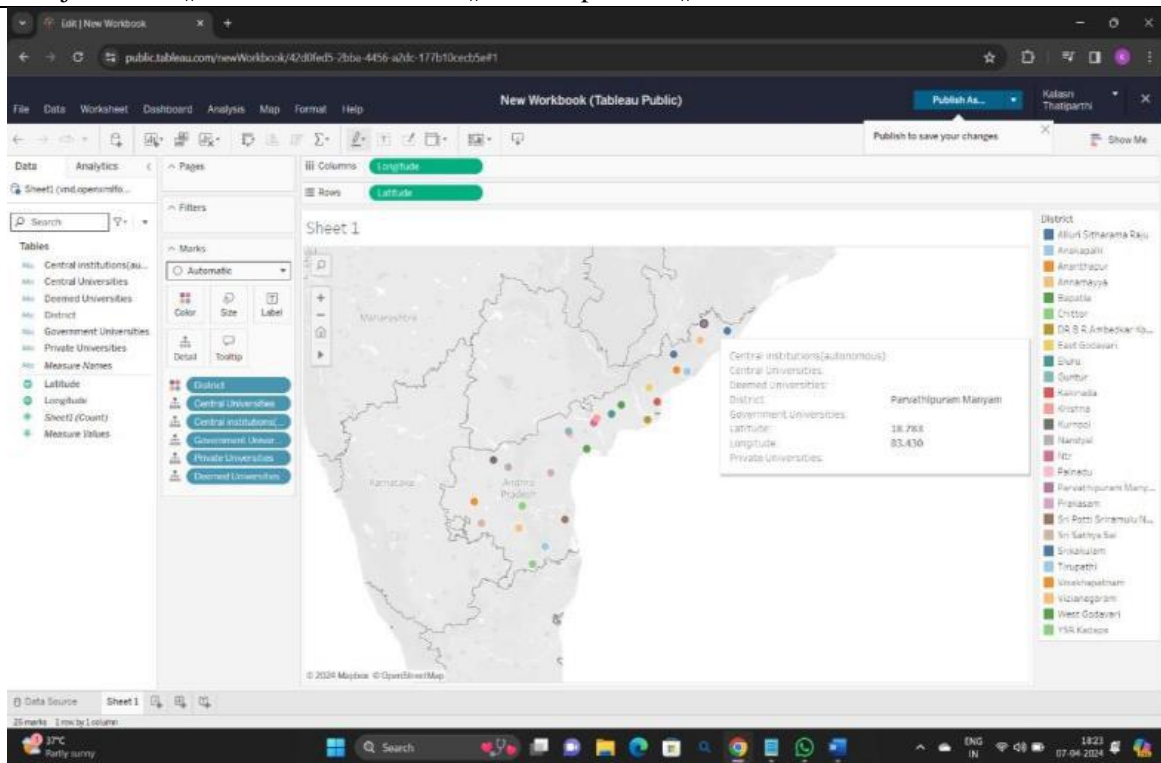


Figure 1.7: Map displaying various universities in the district of Parvathipuram Manyam

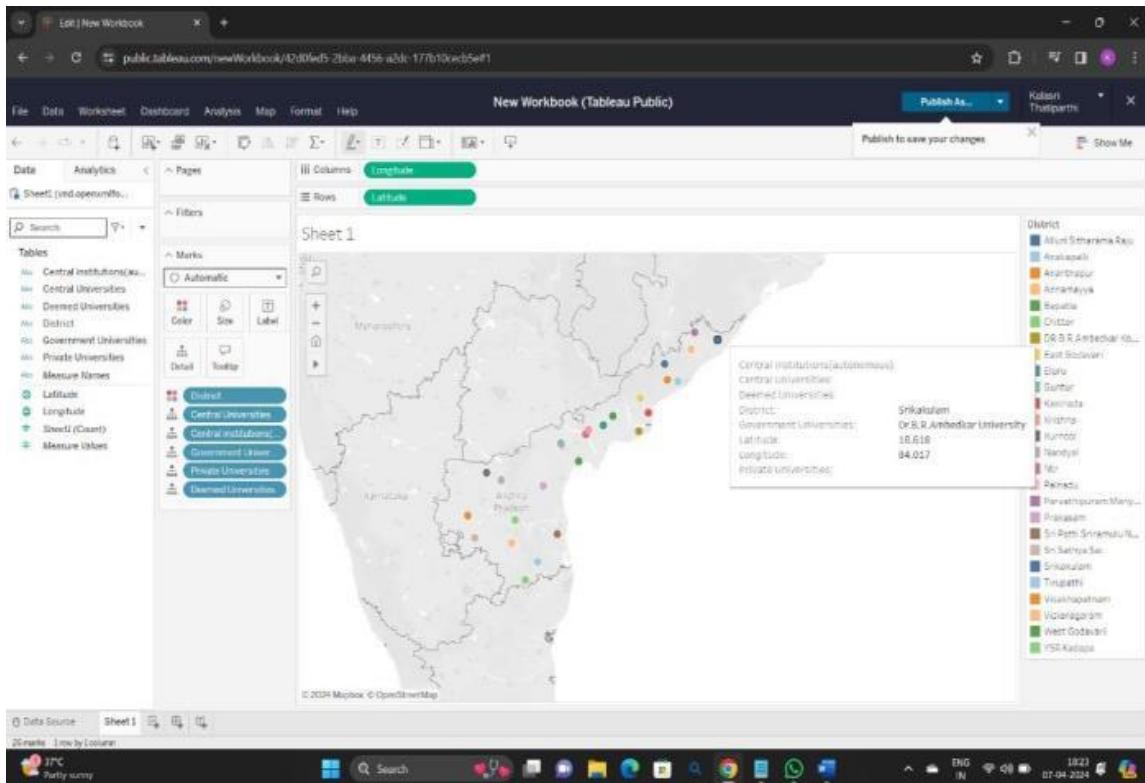


Figure 1.8: Map displaying various universities in the district of Srikakulam

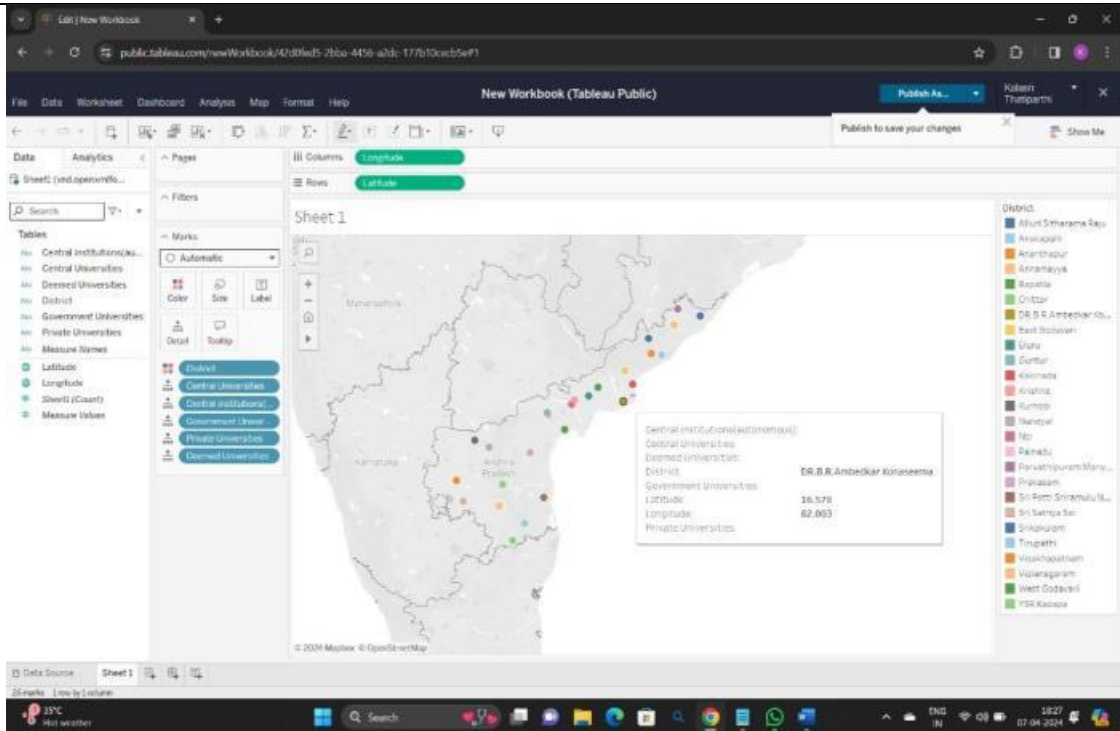


Figure 1.9: Map displaying various universities in the district of DR.B.R.Ambedkar Konaseema

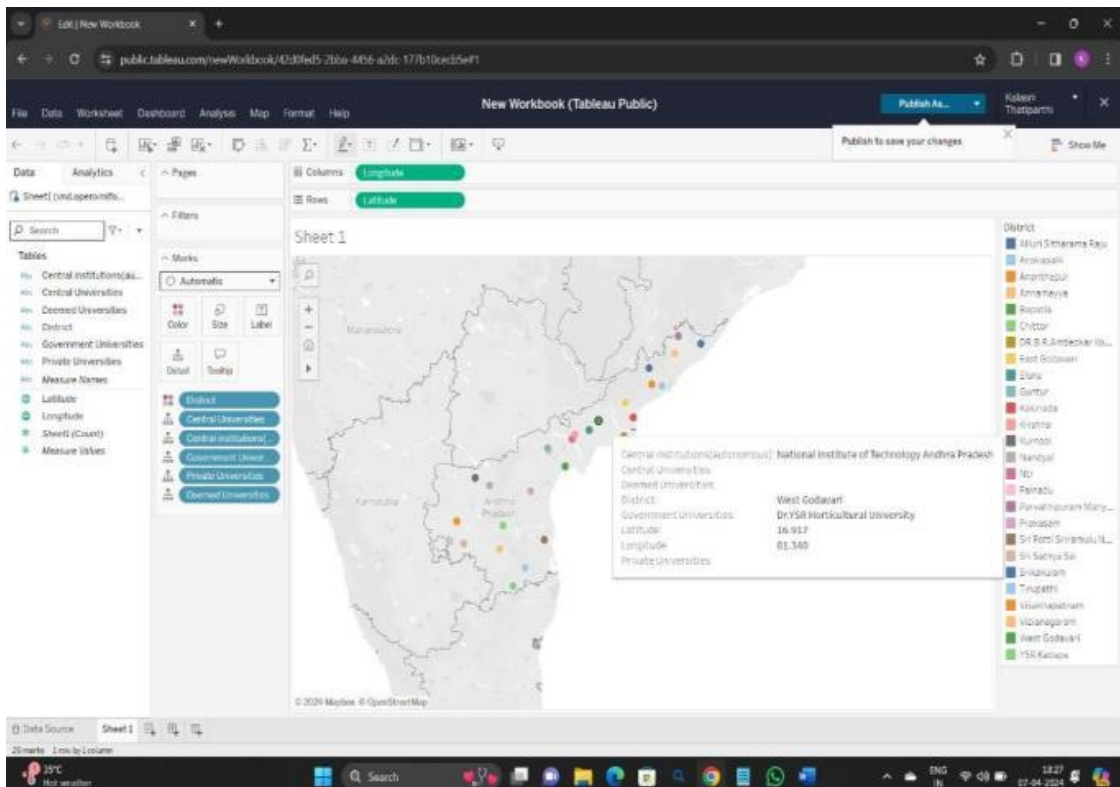


Figure 1.10: Map displaying various universities in the district of West Godavari.

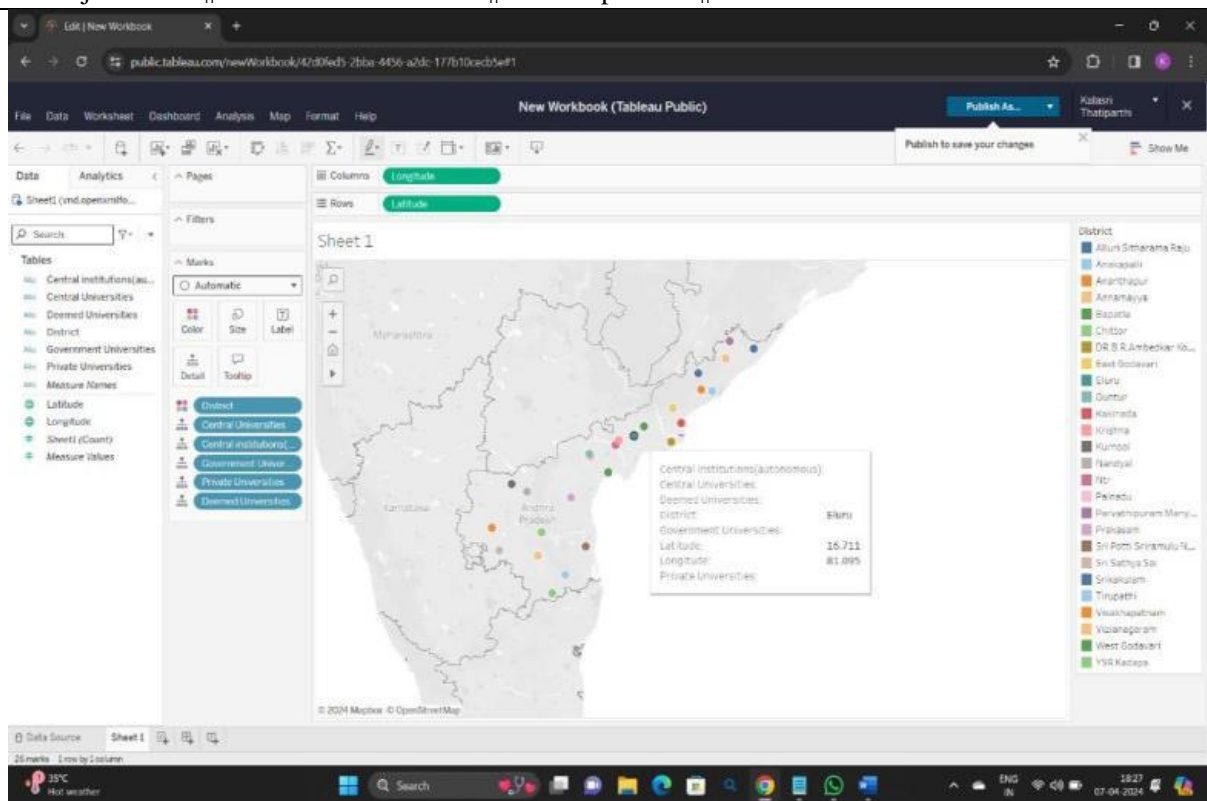


Figure 1.11: Map displaying various universities in the district of Eluru

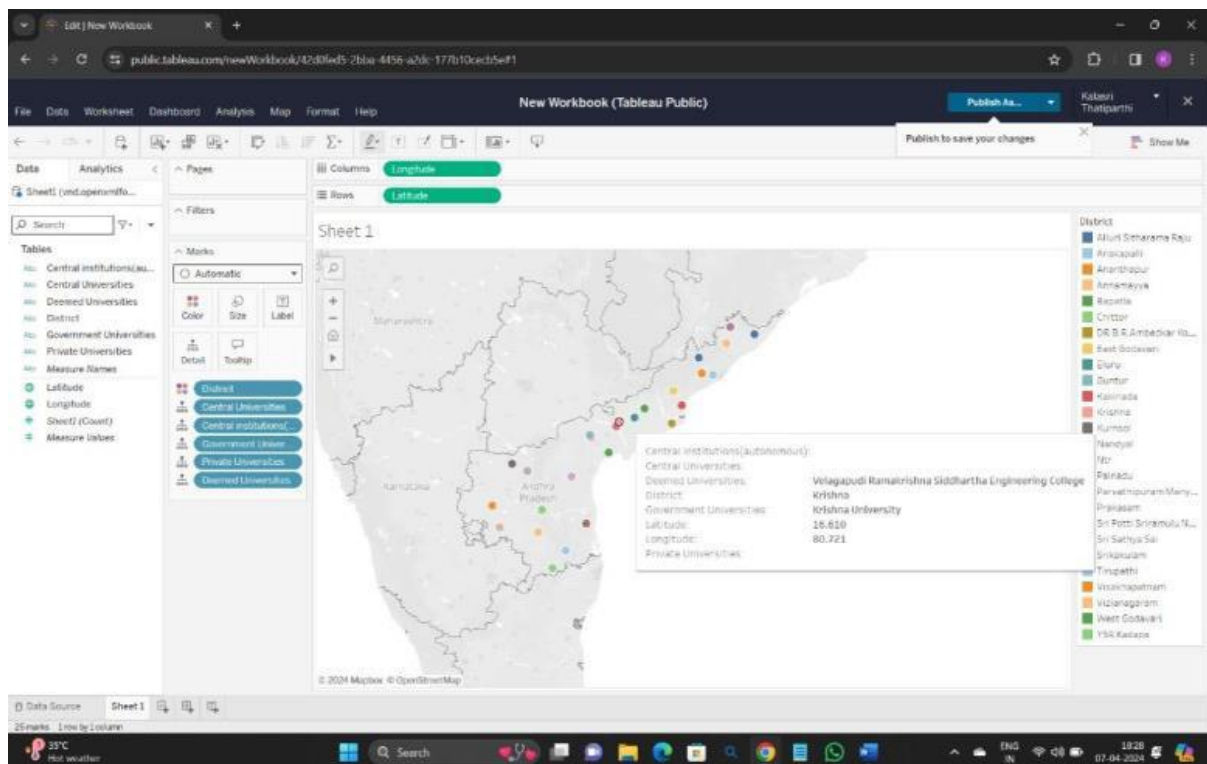


Figure 1.12: Map displaying various universities in the district of Krishna

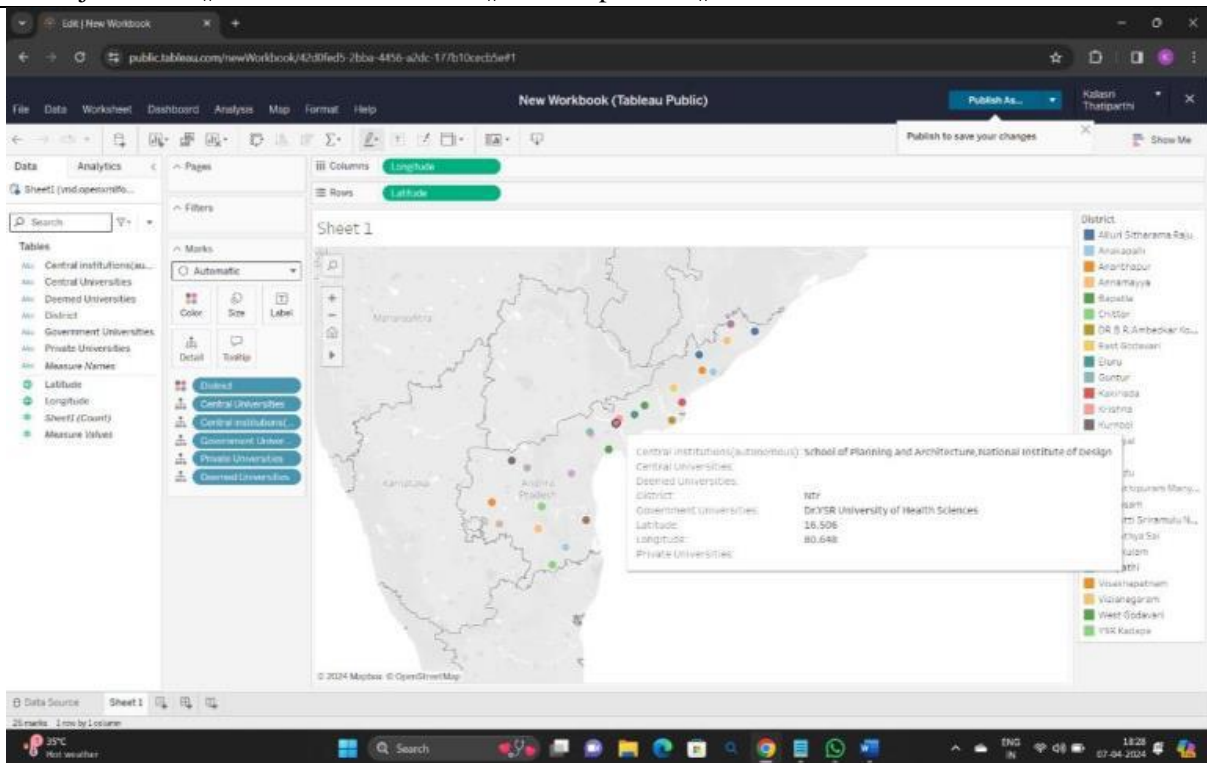


Figure 1.13: Map displaying various universities in the district of NTR

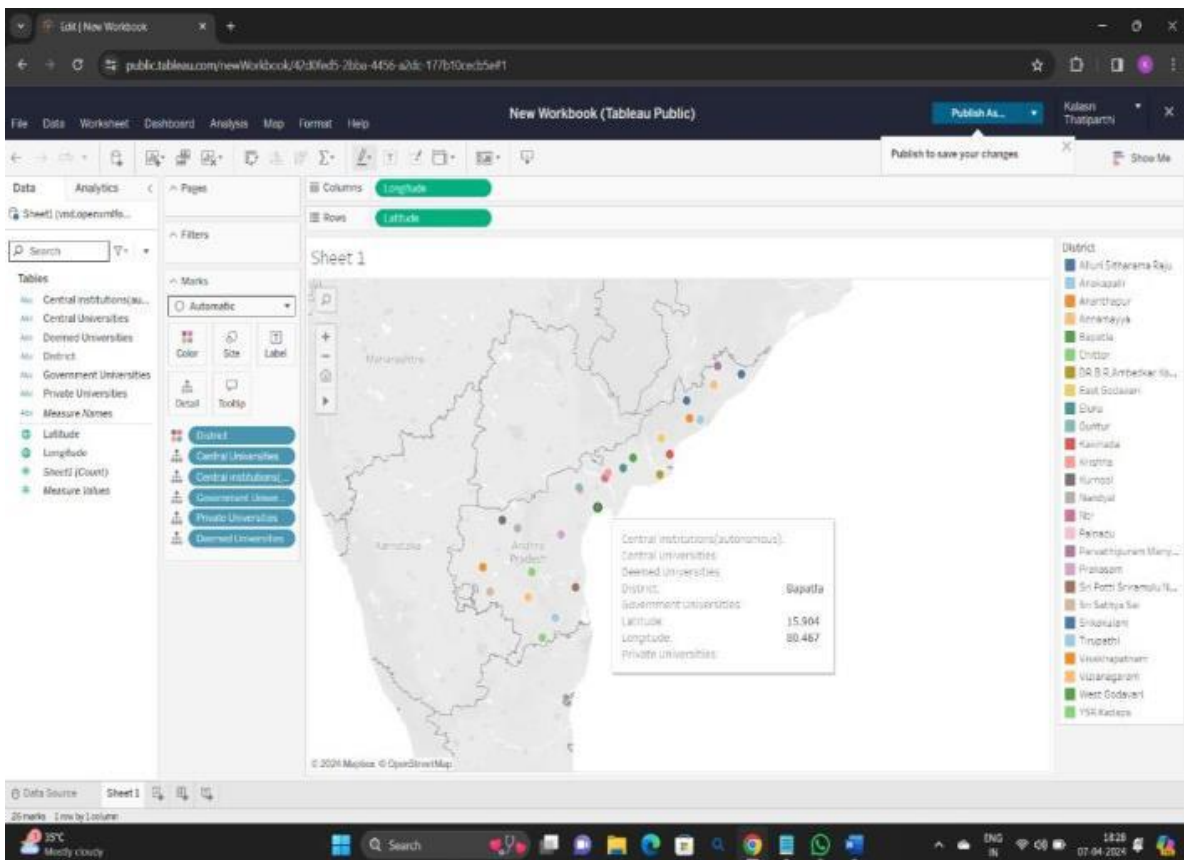


Figure 1.14: Map displaying various universities in the district of Bapatla



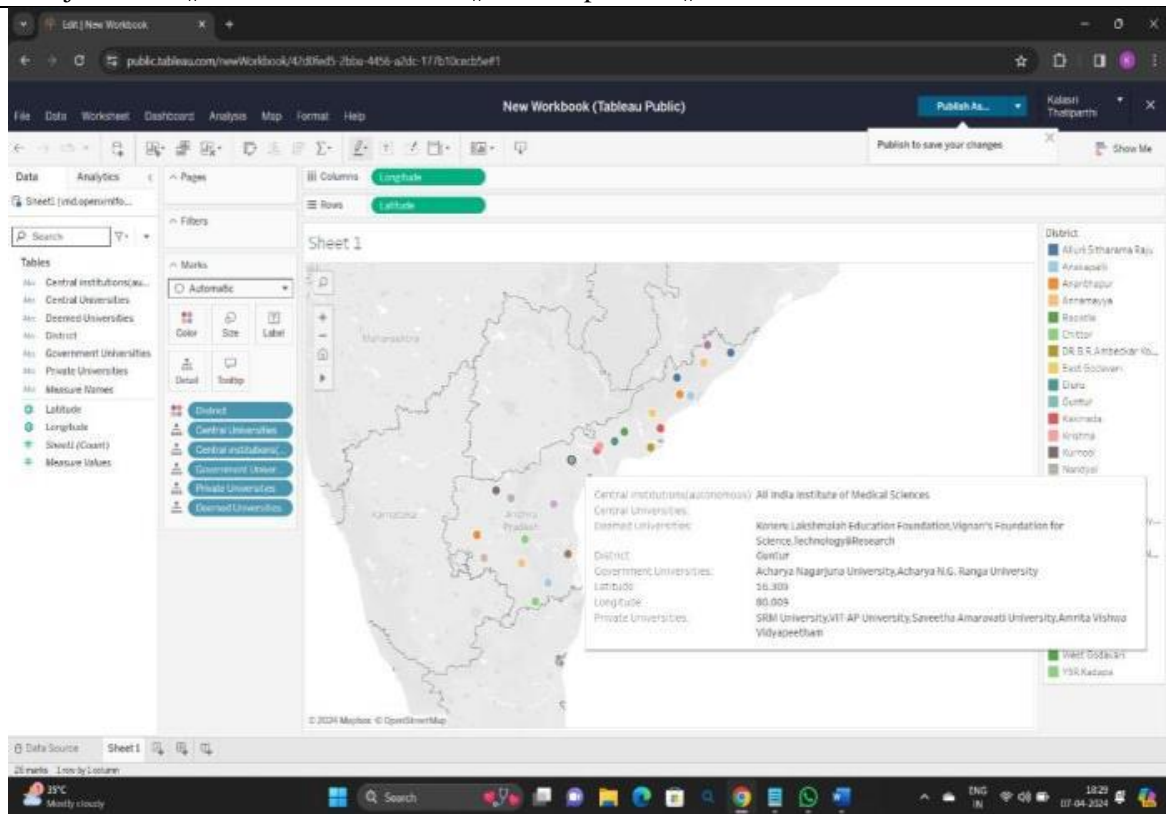


Figure 1.15: Map displaying various universities in the district of Guntur

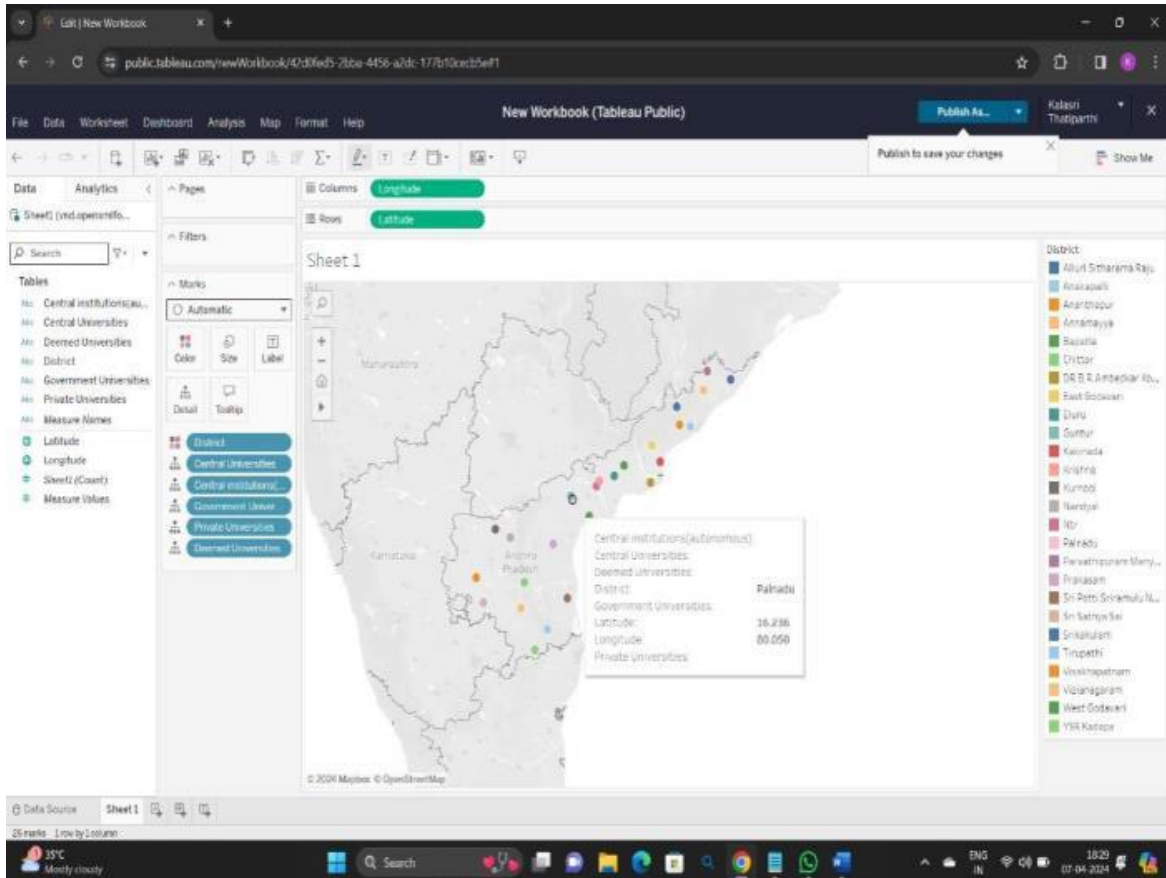


Figure 1.16: Map displaying various universities in the district of Palnadu

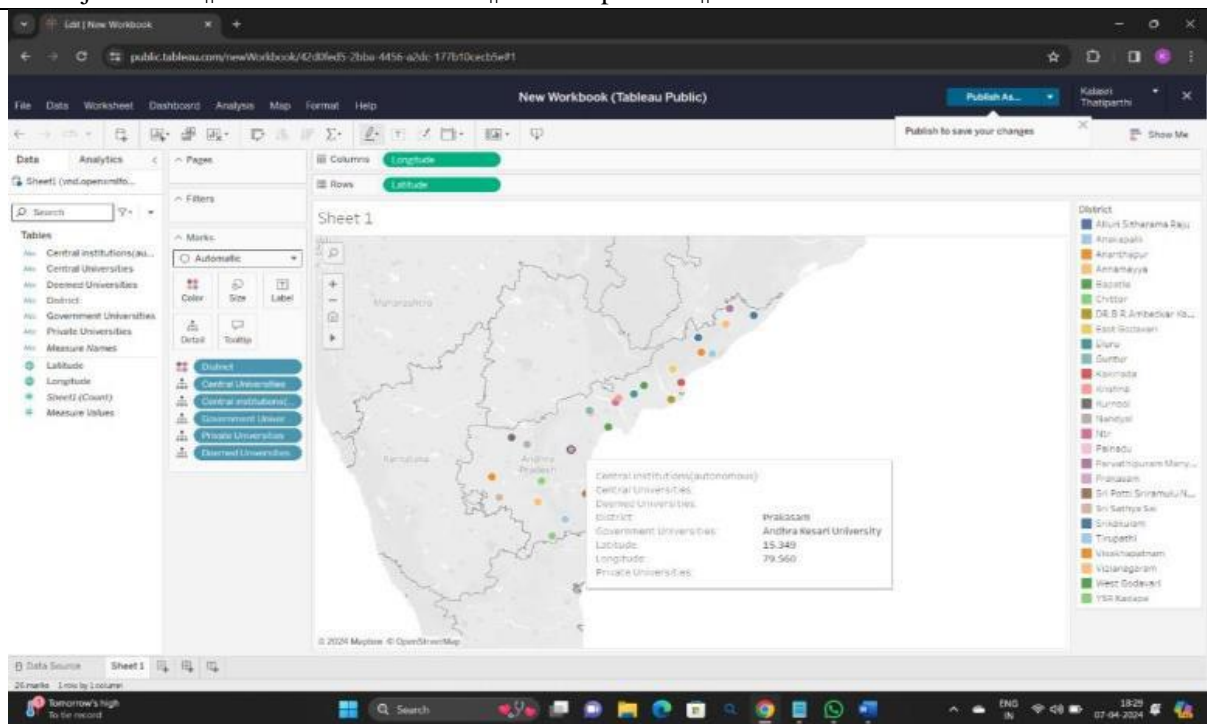


Figure 1.17: Map displaying various universities in the district of Prakasam

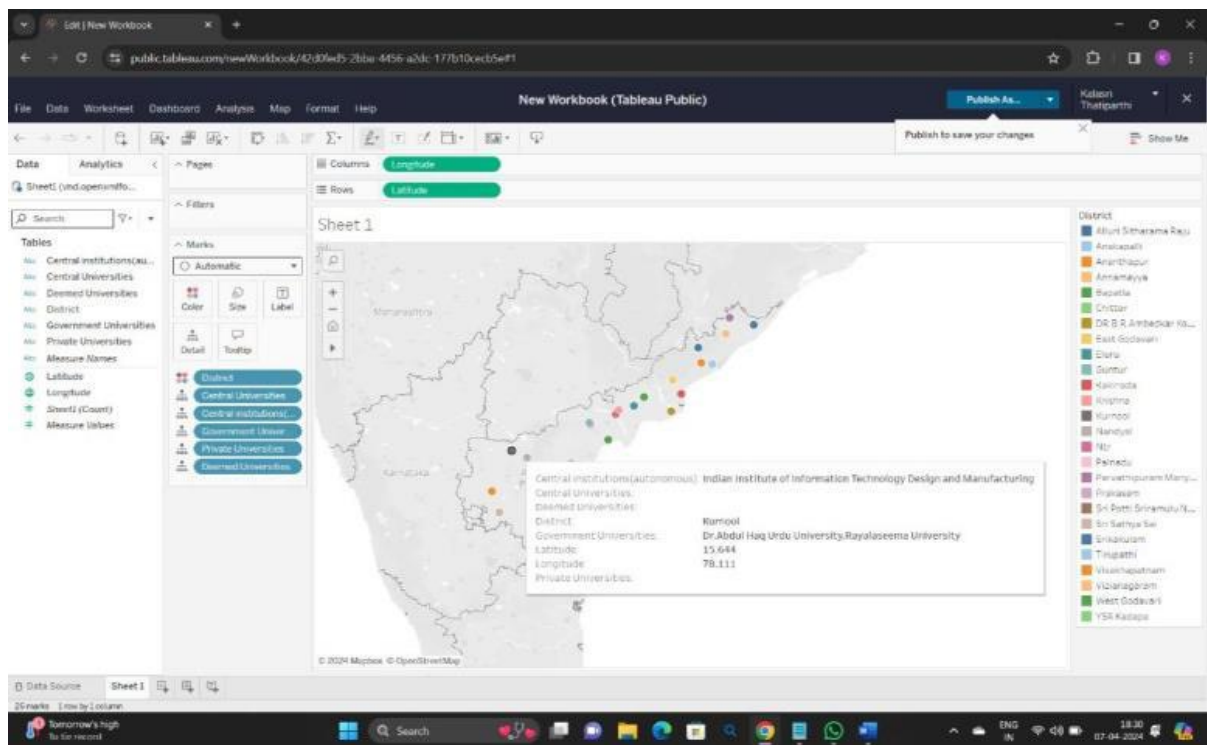


Figure 1.18: Map displaying various universities in the district of Kurnool

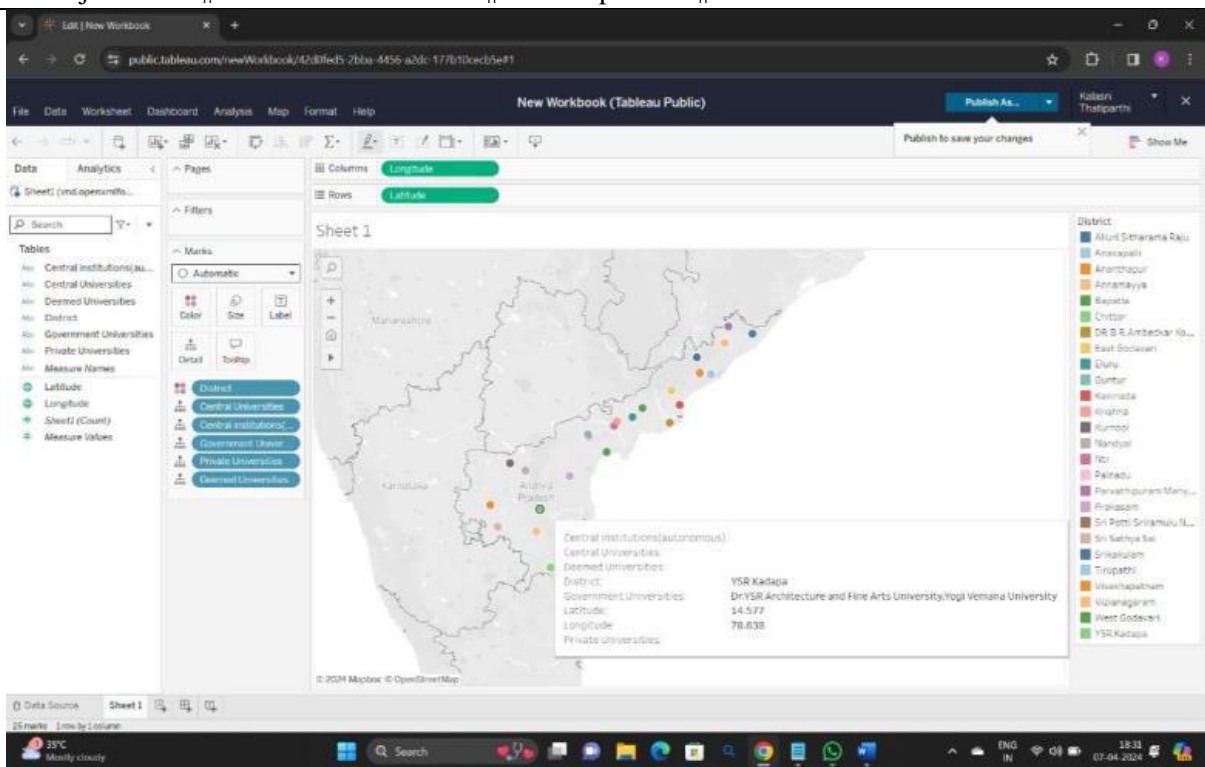


Figure 1.19: Map displaying various universities in the district of YSR Kadapa

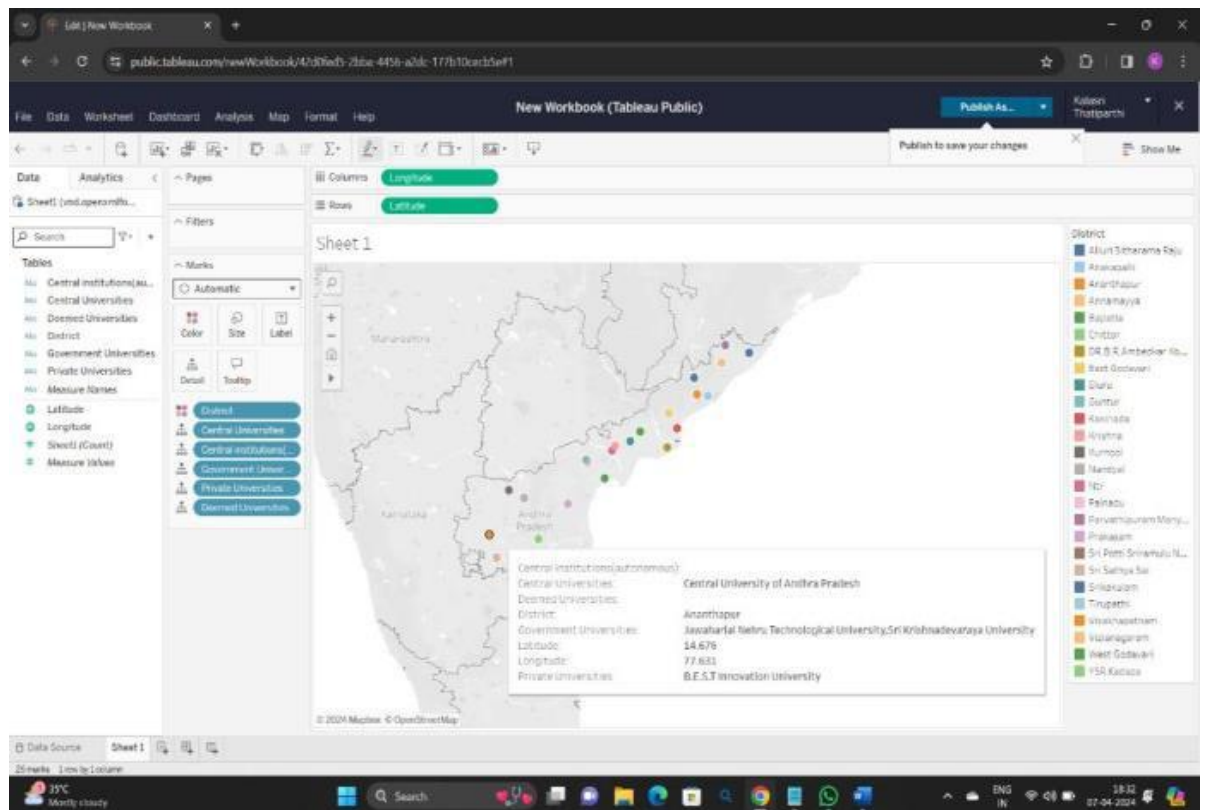


Figure 1.20: Map displaying various universities in the district of Anantapur

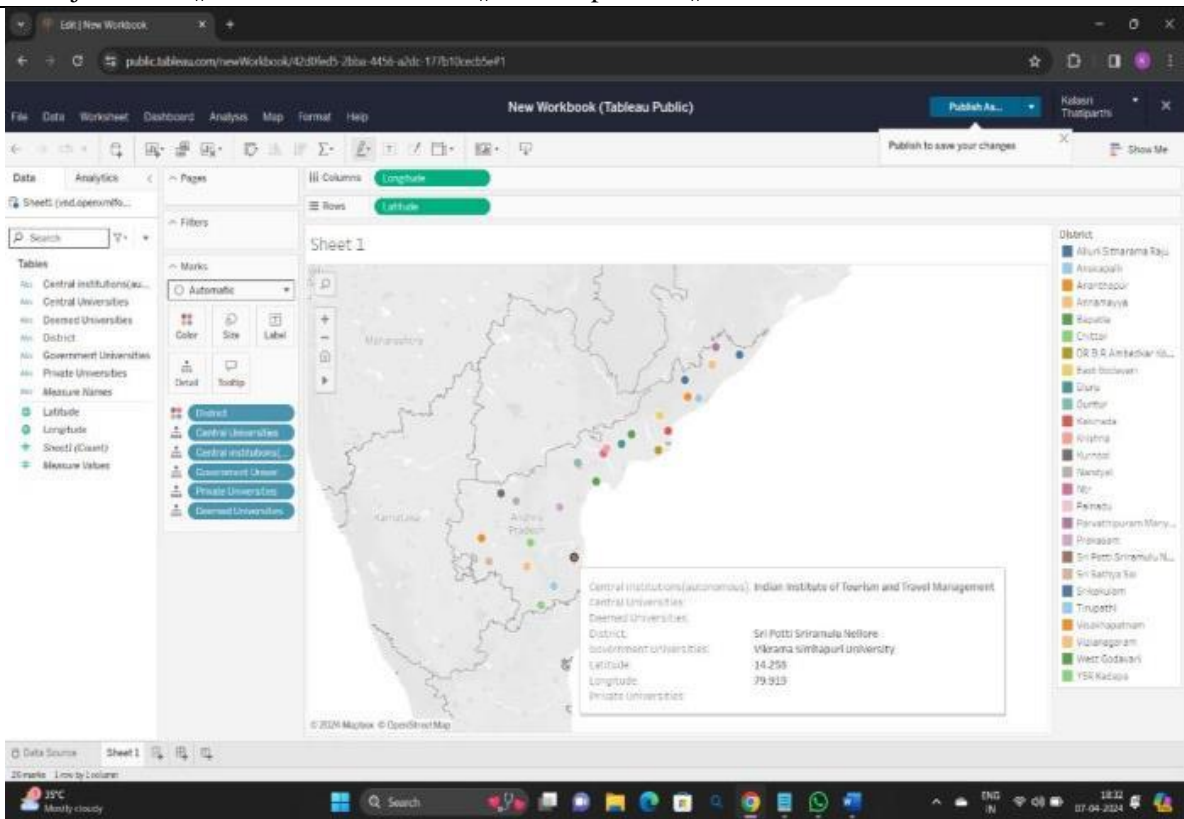


Figure 1.21: Map displaying various universities in the district of Sri Potti Sriramulu Nellore

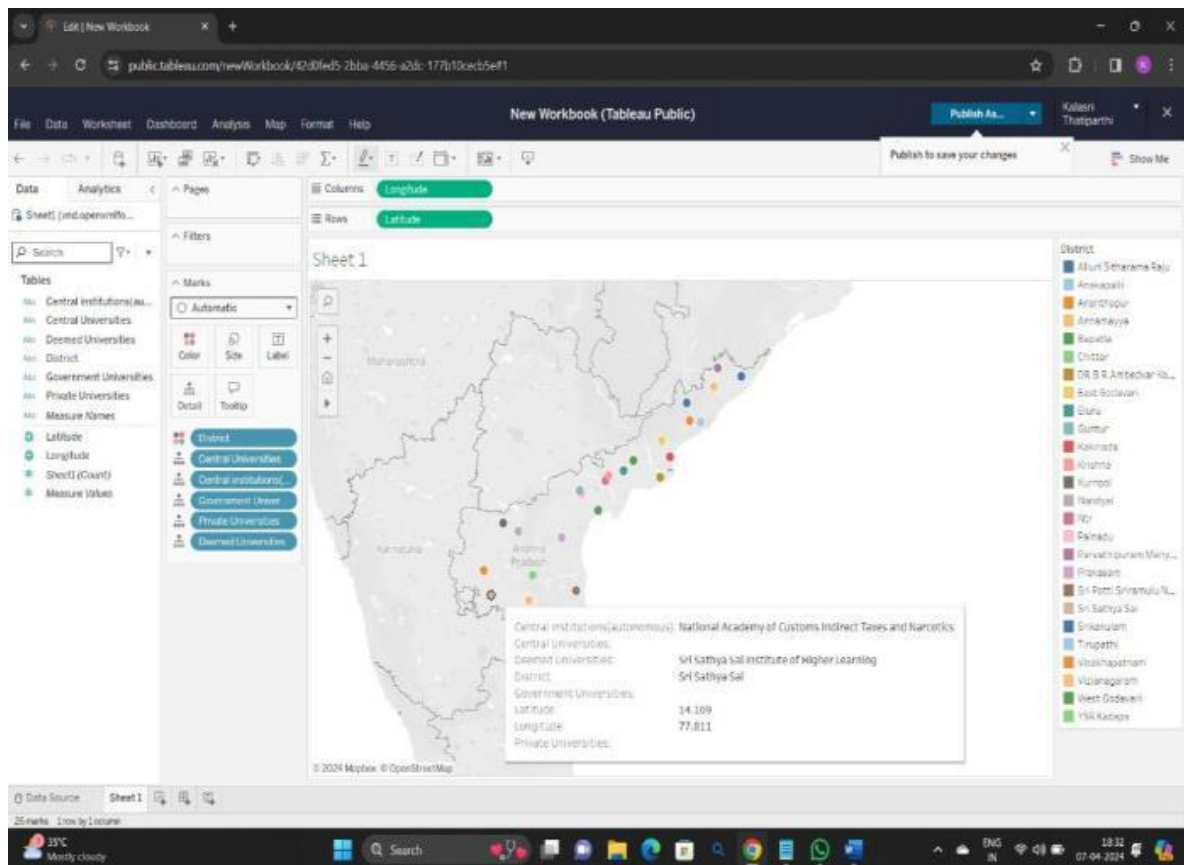


Figure 1.22: Map displaying various universities in the district of Sri Satya Sai



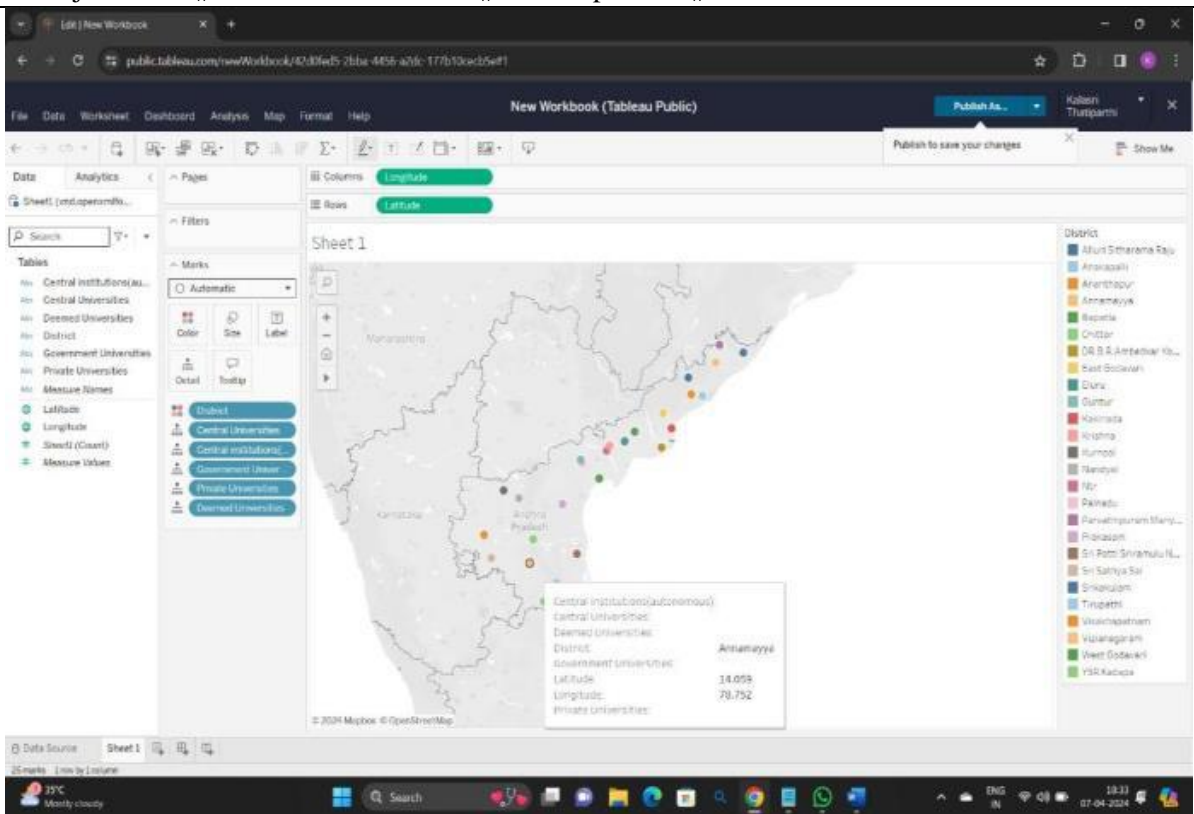


Figure 1.23: Map displaying various universities in the district of Annamaya

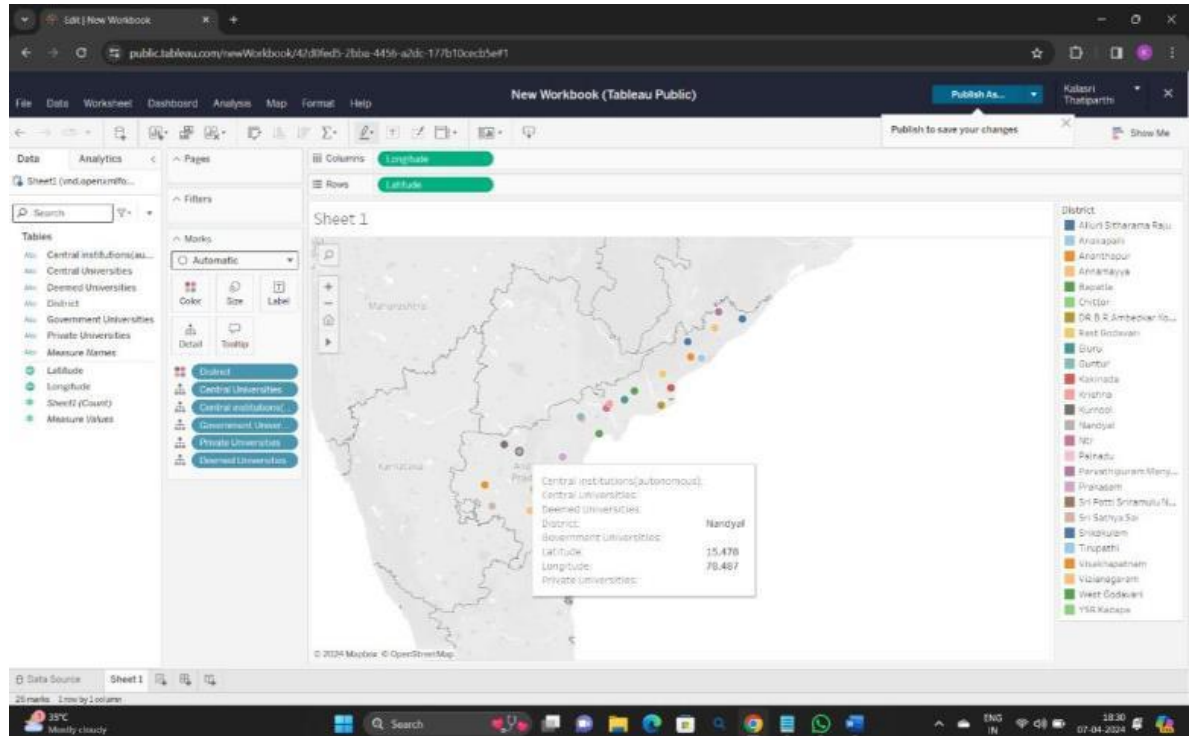


Figure 1.24: Map displaying various universities in the district of Nandyal

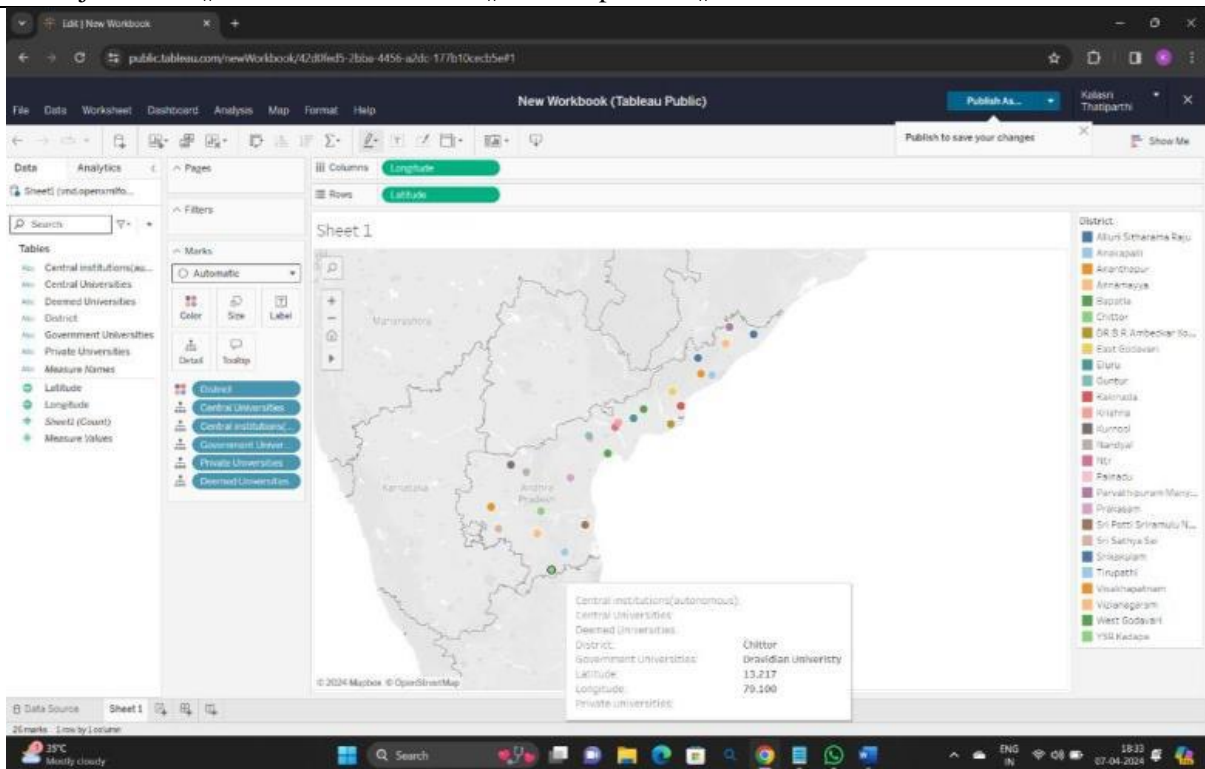


Figure 1.25: Map displaying various universities in the district of Chittoor

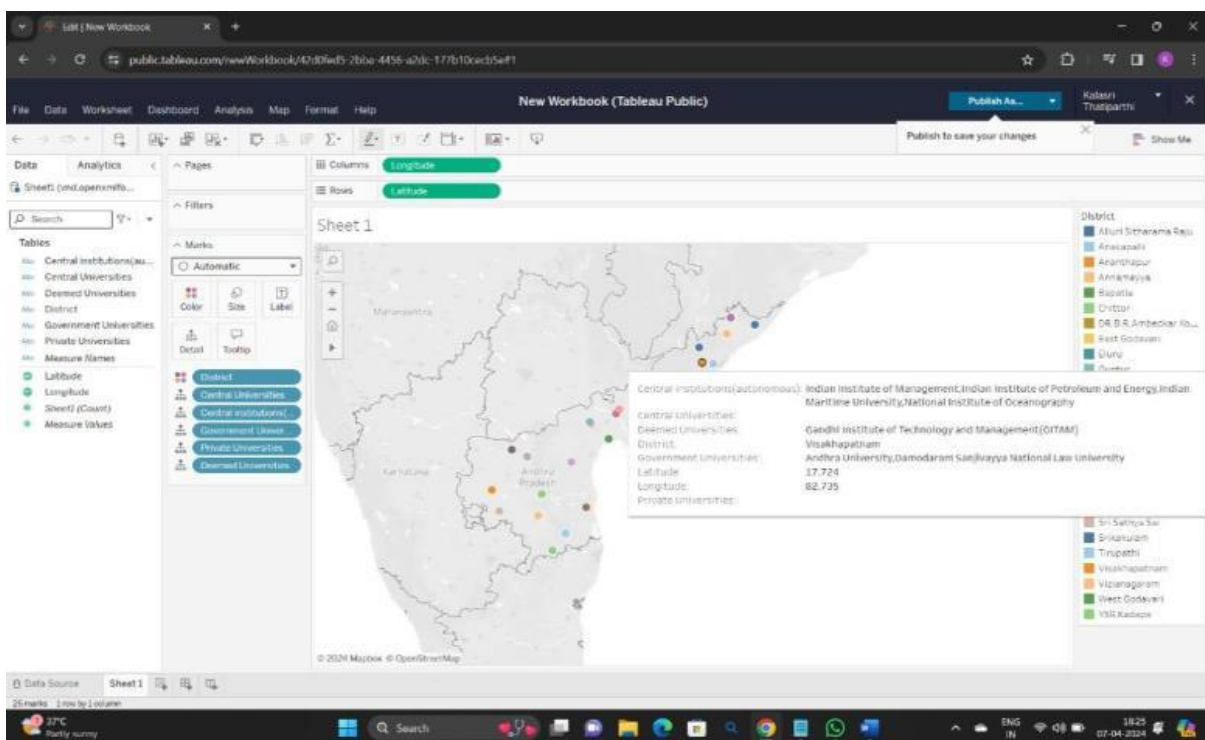


Figure 1.26: Map displaying various universities in the district of Visakhapatnam

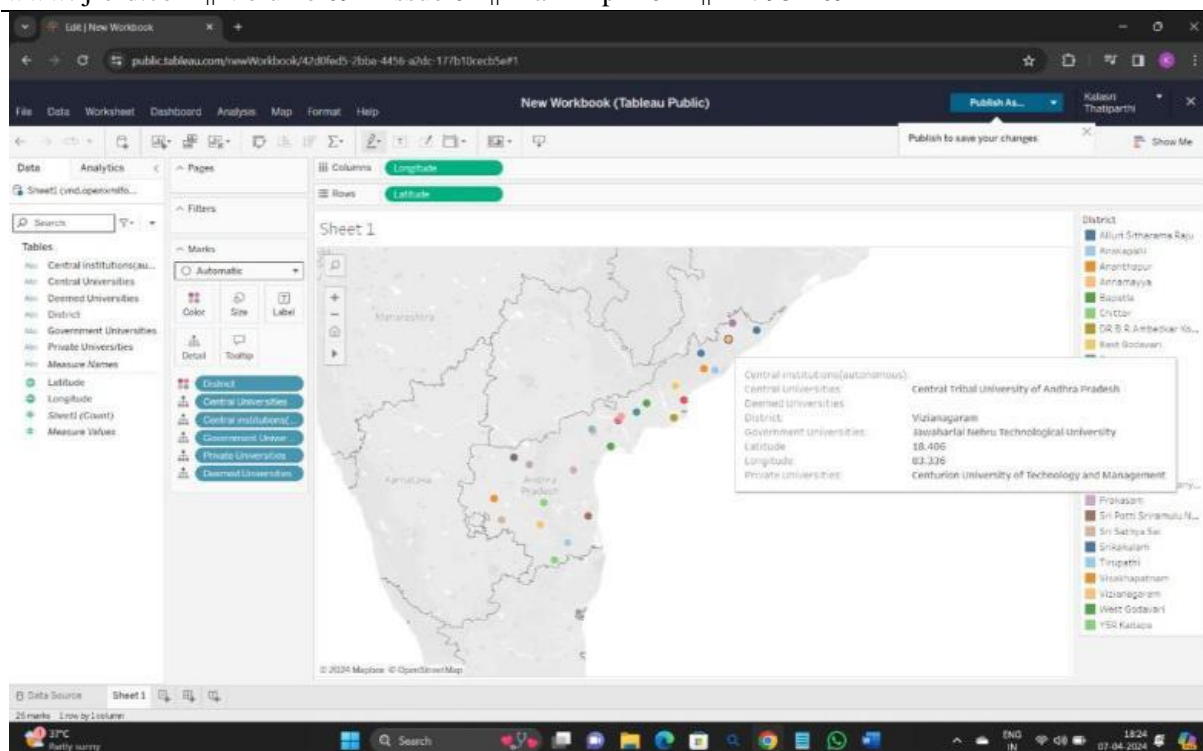


Figure 1.27: Map displaying various universities in the district of Viziaanagram

## 5. Conclusion

By analyzed the data about different categories of universities in Andhra Pradesh, visualizing their districts in the map is helpful to the students and there are some districts like Nandyal, Chittor, Annamayya. etc, where there are no universities. To sum up, Andhra Pradesh has a wide variety of colleges and other educational facilities spread throughout its districts, providing students with access to top-notch instruction and chances for research in a range of subjects. Every type of university makes a distinct contribution to the state's educational environment by meeting the various requirements and interests of scholars and students.

## 6. References

- [1]. <https://www.latlong.net/degrees-minutes-seconds-to-decimal-degrees>
- [2]. [https://en.wikipedia.org/wiki/List\\_of\\_districts\\_of\\_Andhra\\_Pradesh](https://en.wikipedia.org/wiki/List_of_districts_of_Andhra_Pradesh)
- [3]. [https://en.wikipedia.org/wiki/List\\_of\\_institutions\\_of\\_higher\\_education\\_in\\_Andhra\\_Pradesh](https://en.wikipedia.org/wiki/List_of_institutions_of_higher_education_in_Andhra_Pradesh)
- [4]. <https://maps.google.com>